

SIDE VIEW

TOP VIEW

JEDEC SOLID STATE
PRODUCT OUTLINE
Copyright © 2020 JEDEC

THIS *REGISTERED OUTLINE* HAS BEEN PREPARED BY THE JEDEC JC-11 COMMITTEE
AND REFLECTS A PRODUCT WITH ANTICIPATED USAGE IN THE ELECTRONICS INDUSTRY;
CHANGES ARE LIKELY TO OCCUR.

12 PIN UFS CARD,
0.91MM PITCH

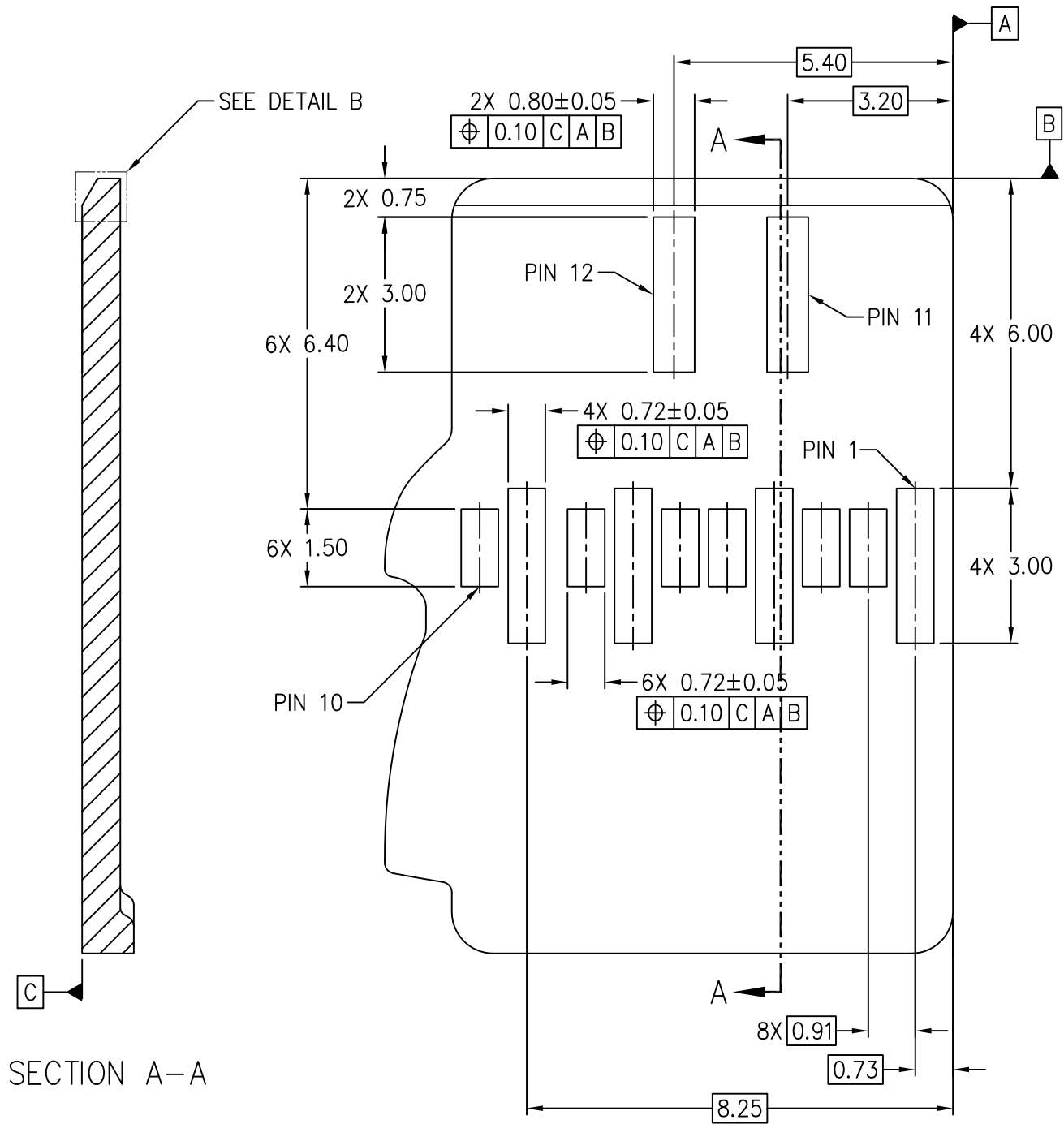
PACKAGE DESIGNATOR
PBMA-N11-I0p91-
CturZ1p0

ITEM
MO-320

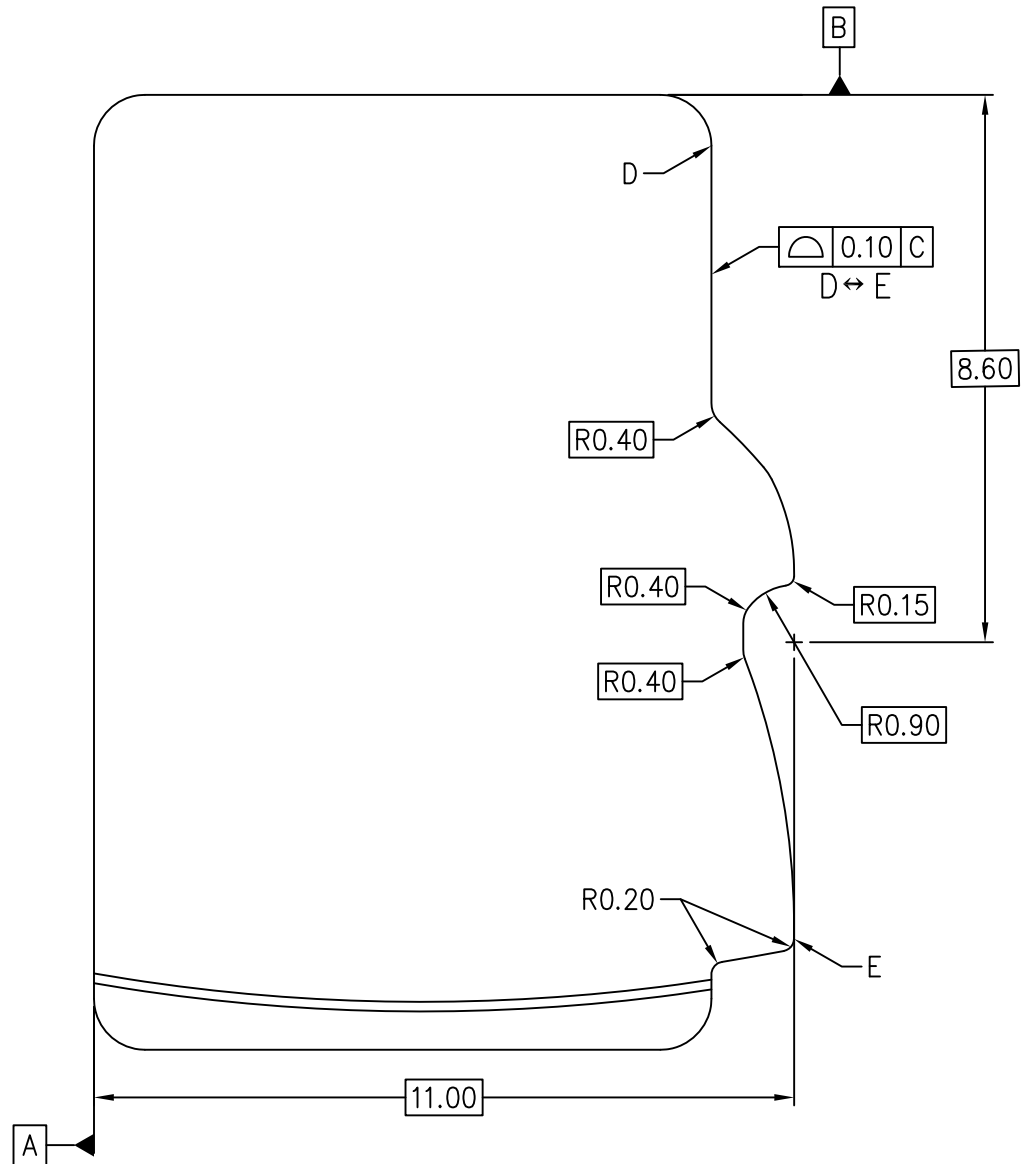
ISSUE
B

DATE
SEP 2020

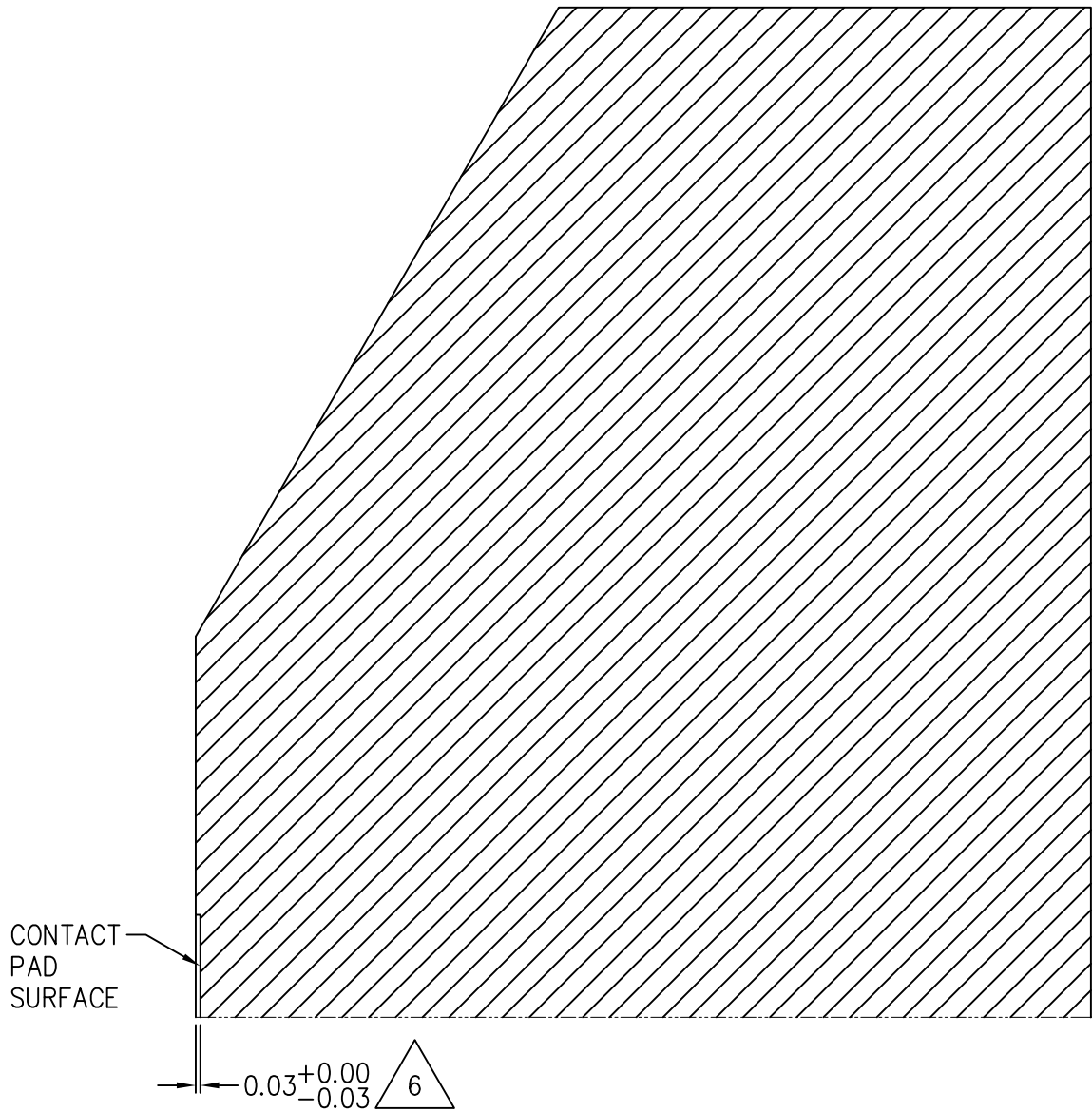
SHEET
1 OF 6







TOP VIEW DETAIL CONTINUED



DETAIL B

NOTES:

1. DIMENSIONING AND TOLERANCING PER ASME Y14.5–2009.
2. TOLERANCES ON ALL DIMENSIONS ± 0.10 UNLESS OTHERWISE SPECIFIED.
3. ALL DIMENSIONS ARE IN MILLIMETERS.



TSC = THEORETICAL SHARP EDGE.



VARIOUS COMPANIES HAVE ISSUED PATENTS AND RELATED PATENT APPLICATIONS THAT MAY APPLY TO THIS REGISTRATION. IF THE CURRENT ISSUE PATENTS OR LATER PATENTS RESULTING FROM RELATED APPLICATIONS DO APPLY, THESE COMPANIES INTEND TO COMPLY WITH THE JEDEC PATENT POLICY AND LICENSE UNDER REASONABLE TERMS AND CONDITIONS THAT ARE DEMONSTRABLY FREE OF ANY UNFAIR DISCRIMINATION. REFERENCED PATENTS ARE AS FOLLOWS.

SAMSUNG	US PATENT NO.: D727910, D736212, D736213, D736214, D736215
	US PATENT APPLICATION NO.: 25/546125, 29/546150



CONTACT PAD SURFACE IS FLAT TO CARD SURFACE OR BELOW CARD SURFACE BY 0.03MM MAXIMUM.

STP (3D) FILE RECORD

3D FILE NAMES MAY EXCEED LENGTH REQUIREMENTS FOR SOME SOFTWARE TOOLS.

STP FILE NAME	ISSUE	DATE	ITEM NUMBER
PBMA-N11-I0p91-CturZ1p0	B	SEP 2020	11-985

TASK GROUP CONTRIBUTORS

AMPHENOL EAST ASIA LTD.

CHANGE RECORD

IF THE CHANGE INVOLVES ANY WORDS ADDED OR DELETED (EXCLUDING DELETION OF ACCIDENTALLY REPEATED WORDS), THE CHANGE IS TO BE INCLUDED BELOW. PUNCTUATION CHANGES MAY OR MAY NOT BE INCLUDED.

INITIAL ISSUE: A	DATE: MARCH 2016	ITEM NUMBER: 11-921
------------------	------------------	---------------------

CHANGE RECORD HISTORY:

INITIAL ISSUE: B	DATE: SEPTEMBER 2020	ITEM NUMBER: 11-985
------------------	----------------------	---------------------

LOCATION:	CHANGED FROM:	CHANGED TO:
SHEET 1, PKG DESIGNATOR	UFS CARD	PBMA-N11-I0p91-CturZ1p0
SHEET 2		ADDED SECTION A-A
SHEET 5		NEW SHEET
SHEET 6		ADDED NOTE 6